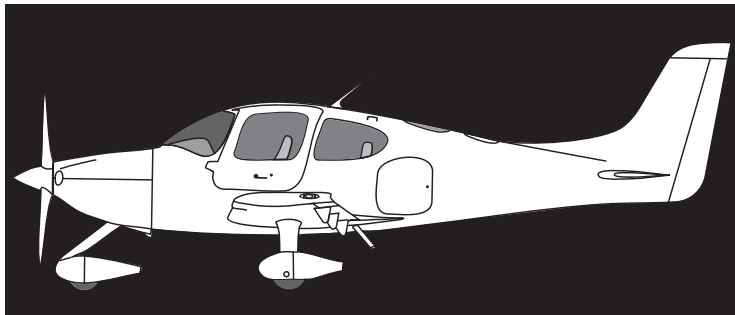


## IDENTIFY THE AIRCRAFT



## NOTIFY

CIRRUS: 1.800.279.4322 U.S.  
1.952.988.1940 INTERNATIONAL

NO PORTION OF THE WRECKAGE SHOULD BE  
MOVED WITHOUT PERMISSION FROM THE NTSB.

NTSB: 202.314.6290

CIRRUS DESIGN CORPORATION  
4515 TAYLOR CIRCLE  
DULUTH, MN 55811  
cirrusdesign.com



# ADVISORY GUIDE for FIRST RESPONDERS

what you should do: IDENTIFY & NOTIFY

All US civil aircraft accidents fall under the jurisdiction of the National Transportation Safety Board (NTSB). When the response shifts from the rescue phase to the investigation and recovery phases, the site must be cordoned off and secured *as you would a crime scene*. As a first responder please use this Advisory Guide at Cirrus aircraft accident sites.

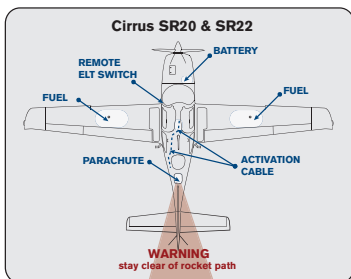
Document what you do at the site with photos or videos when possible.

## Cirrus Airframe Parachute System [CAPS™]

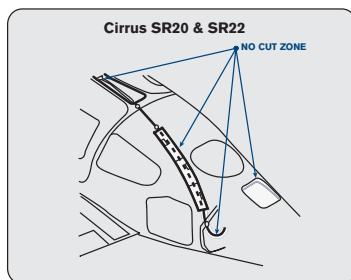
1– Call 800.279.4322 or 952.988.1940 for help.  
DO NOT CUT INTO CABIN ROOF.

2– Brief all persons on site about the potential hazards the system(s) may present.

3– In case of smoke or fire, wear oxygen breathing equipment.

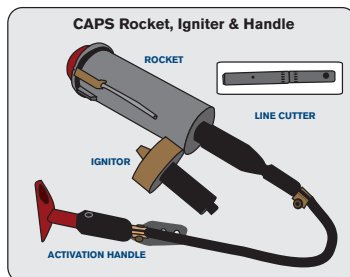


4– Always approach the aircraft from the front or sides.

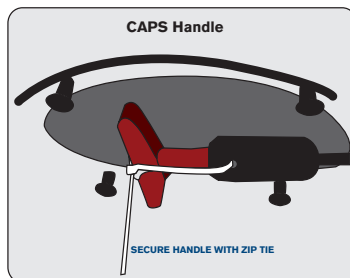


5– Determine if there is a Ballistic Parachute System on board the aircraft.

6– If deployed, deflate parachute canopy with water and anchor it with a heavy vehicle.



7– Locate, mark and isolate all BRS system components:  
Rocket  
Igniter  
Reefing line cutters



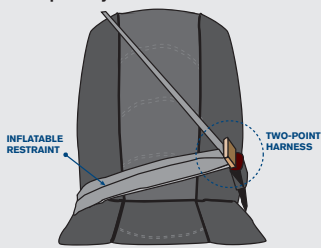
8– Secure the red activation handle with an 11-inch plastic zip tie.

9– Hazardous system components should be removed from the aircraft by trained personnel before any portion of the wreckage is moved.

## AmSafe Aircraft Inflatable Restraints [AAIR™]

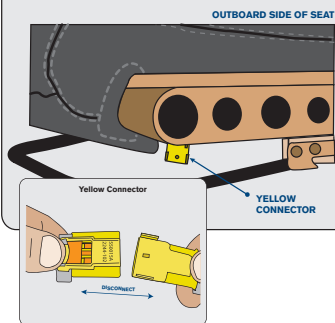
- 1– Call 800.279.4322 or 952.988.1940 for help.
- 2– Brief all persons on site about the potential hazards the system(s) may present.
- 3– In case of smoke or fire, wear oxygen breathing equipment.
- 4– Always approach the aircraft from the front or sides.

### Two-point System with Inflatable Restraint

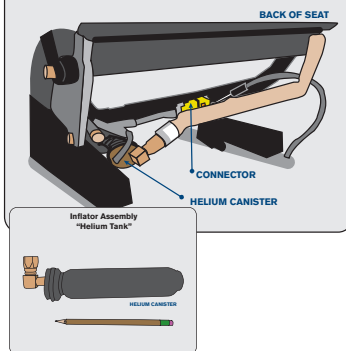


- 5– Unbuckle all 2- and 3- point harness systems.

### Cirrus Aircraft Yellow Connector Located Under Seat

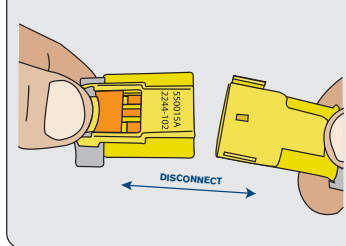


### Other Aircraft Yellow Connector Located Under Seat



- 6– LOCATE the yellow connectors on the 4- and 5- point harness systems located UNDER the seats, or the outboard side and then UNPLUG or CUT these wires with any kind of wire cutter.

### Yellow Connector



- 7– Hazardous system components should be removed from the aircraft by trained personnel before any portion of the wreckage is moved.